

### Specification

Nominal Voltage	12V	
Nominal Capacity(20HR)	33.0AH	
Dimension	Length	195 ± 2mm (7.68 inches)
	Width	130 ± 2mm (5.12 inches)
	Container Height	164 ± 2mm (6.46 inches)
	Total Height (with Terminal)	167 ± 2mm (6.57 inches)
Approx Weight	Approx 10.7 kg (23.6lbs)	
Terminal	T5 / T6	
Container Material	ABS	
Rated Capacity	30.0 AH/1.50A	(20hr, 1.80V/cell, 25 °C/77 °F)
	27.0 AH/2.70A	(10hr, 1.75V/cell, 25 °C/77 °F)
	24.0 AH/4.80A	(5hr, 1.75V/cell, 25 °C/77 °F)
	20.1 AH/6.69A	(3hr, 1.75V/cell, 25 °C/77 °F)
	17.1 AH/17.1A	(1hr, 1.67V/cell, 25 °C/77 °F)
Max. Discharge Current	300A (5s)	
Internal Resistance	Approx 14.6m Ω	
Operating Temperature Range	Discharge	-20 ~ 55°C (-4 ~ 131°F)
	Charge	0 ~ 40°C (32 ~ 104°F)
	Storage	-20 ~ 50°C (-4 ~ 122°F)
Nominal Operating Temperature Range	25 ± 3°C (77 ± 5°F)	
Cycle Use	Initial Charging Current less than 6.0A. Voltage 14.4V~15.0V at 25°C(77°F)Temp. Coefficient -30mV/°C	
	Standby Use No limit on Initial Charging Current Voltage 13.5V~13.8V at 25°C(77°F)Temp. Coefficient -20mV/°C	
Capacity affected by Temperature	40°C (104°F)	103%
	25°C (77°F)	100%
	0°C (32°F)	86%
Self Discharge	ZINOVA ZGseries batteries may be stored for up to 9 months at 25°C(77°F) and then a freshening charge is required. For higher temperatures the time interval will be shorter.	



### Applications

- ◆ Telecommunications
- ◆ Solar system
- ◆ Wind power system
- ◆ Engine starting
- ◆ Wheelchair
- ◆ Floor cleaning machines
- ◆ Golf trolley
- ◆ Boats



### Constant Current Discharge (Amperes) at 25 °C (77°F)

F.V/Time	20min	30min	45min	1h	2h	3h	4h	5h	6h	7h	8h	9h	10h	20h
1.85V/cell	25.4	19.9	15.2	13.2	8.07	6.15	5.09	4.40	3.80	3.36	3.03	2.77	2.53	1.44
1.80V/cell	29.1	22.3	16.8	14.6	8.73	6.59	5.40	4.62	3.99	3.52	3.18	2.91	2.65	1.50
1.75V/cell	32.7	24.5	18.1	15.6	9.26	6.96	5.66	4.80	4.13	3.64	3.28	3.00	2.70	1.53
1.70V/cell	35.2	26.2	19.2	16.5	9.81	7.25	5.84	4.95	4.27	3.76	3.38	3.08	2.76	1.55
1.67V/cell	36.6	27.2	19.9	17.1	10.1	7.48	5.99	5.05	4.34	3.82	3.43	3.12	2.80	1.56
1.60V/cell	39.7	29.2	21.4	18.2	10.5	7.78	6.21	5.21	4.45	3.90	3.49	3.19	2.85	1.59

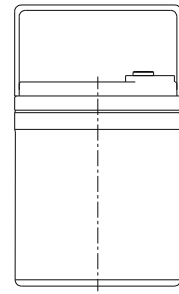
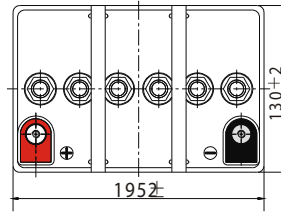
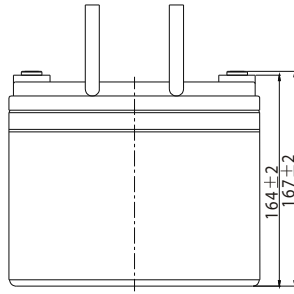
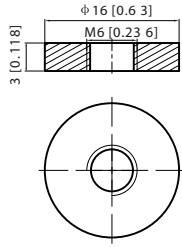
### Constant Power Discharge (Watts/cell) at 25 °C (77°F)

F.V/Time	20min	30min	45min	1h	2h	3h	4h	5h	6h	7h	8h	9h	10h	20h
1.85V/cell	48.6	38.4	29.5	25.7	15.8	12.0	10.0	8.68	7.52	6.67	6.03	5.52	5.05	2.87
1.80V/cell	54.9	42.5	32.3	28.2	17.0	12.9	10.6	9.09	7.87	6.96	6.30	5.79	5.27	2.99
1.75V/cell	61.0	46.3	34.6	30.0	17.9	13.6	11.0	9.41	8.12	7.19	6.49	5.96	5.37	3.05
1.70V/cell	65.0	49.2	36.5	31.6	18.9	14.1	11.4	9.68	8.39	7.42	6.67	6.11	5.49	3.08
1.67V/cell	66.9	50.5	37.5	32.6	19.3	14.5	11.6	9.85	8.50	7.50	6.76	6.17	5.54	3.11
1.60V/cell	71.7	53.6	40.0	34.4	20.0	15.0	12.0	10.1	8.68	7.64	6.86	6.29	5.64	3.15

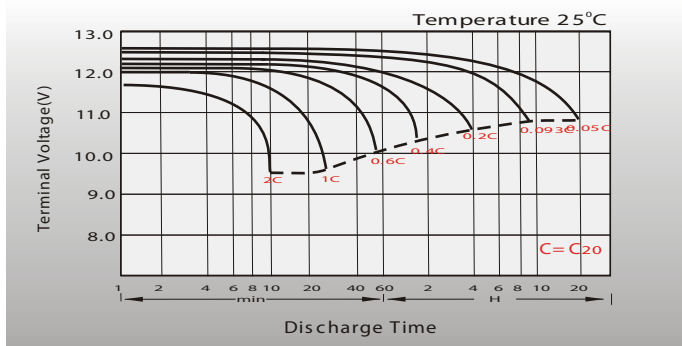
# Dimensions

## T6 Terminal

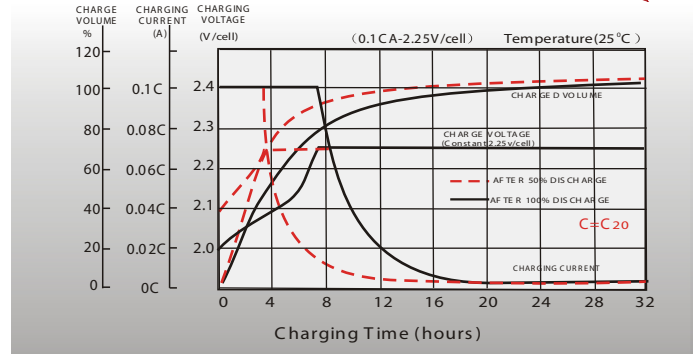
Unit: mm [inches]



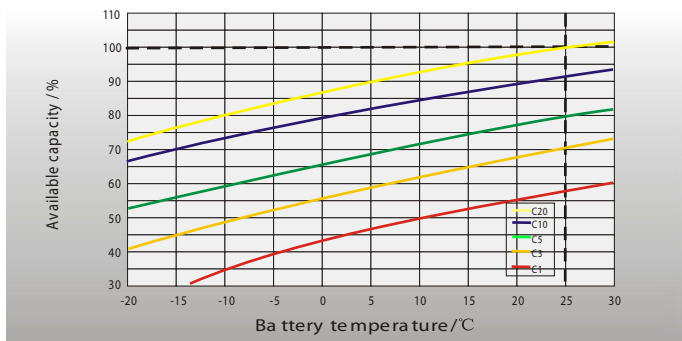
## Discharge Characteristics



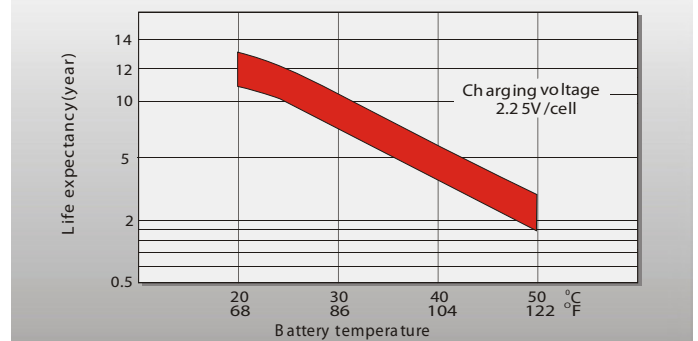
## Float Charging Characteristics



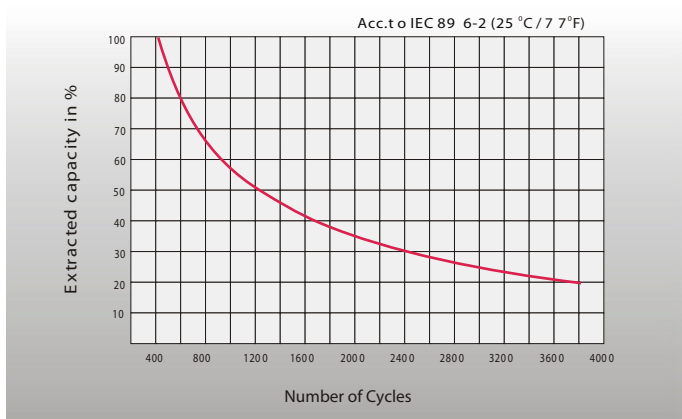
## Temperature Effects in Relation to Battery Capacity



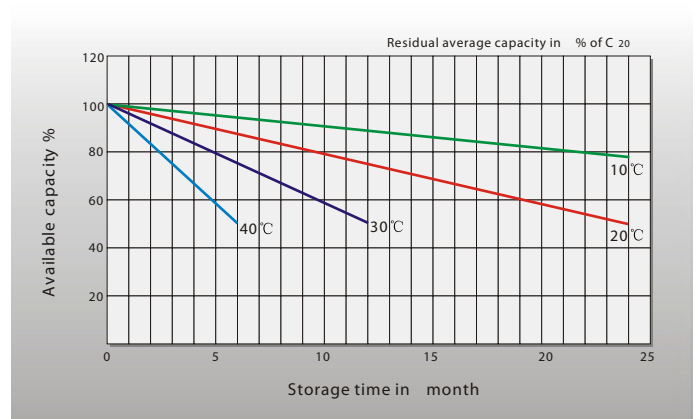
## Effect of Temperature on Long Term Float Life



## Cycle Life in Relation to Depth of Discharge



## General Relation of Capacity VS. Storage Time



## Sales Office

### China sales office:

Add: 5th Floor, Xinbaohui Bldg., Nanhai Blvd.,  
Nanshan, Shenzhen, China. 518052  
Tel: +86-755-86036060 (100 lines)  
Fax: +86-755-26067269  
E-mail: export@leoch.com  
Http://www.leoch.com

### North America sales office:

Add: 19751 Descartes, Unit A,  
Foothill Ranch, CA 92610, USA  
Tel: 949-588-5853  
Fax: 949-588-5966  
E-mail: sales@leoch.us  
Http://www.leoch.us

### Europe sales office:

Add: 9B Wheatstone Park, Waterwells  
Business Park, Gloucester, GL2 2AQ, UK.  
Tel: +44(0) 01452 729428  
Fax: +44 (0)1452-690125  
E-mail: Sales.Europe@leoch.com

### Singapore sales office:

Add: No.53, Ubi Avenue 1, #03-21 Paya  
Ubi Industrial Park, Singapore 408934  
Tel: + 65 6841 6629  
E-mail: sales.sg@leoch.com

### HongKong sales office:

Add: Unit 3910, 39/F, Cable TV Tower, No.9  
Hoi Shing Road, Tsuen Wan, NT, H.K  
Tel: +852 3578 6666  
E-mail: sales.hk@leoch.com