



Specification

Nominal Voltage	12V	
Nominal Capacity(20HR)	18.0AH	
Dimension	Length	181.5±2mm (7.15 inches)
	Width	77±1mm (3.03 inches)
	Container Height	167.5±2mm (6.59 inches)
	Total Height (with Terminal)	167.5±2mm (6.59 inches)
Approx Weight	Approx 5.8 kg (12.8lbs)	
Terminal	T12	
Container Material	ABS	
Rated Capacity	17.0 AH/0.85A	(20hr,1.80V/cell,25 °C/77 °F)
	15.8 AH/1.58A	(10hr,1.75V/cell,25 °C/77 °F)
	13.6 AH/2.72A	(5hr,1.75V/cell,25 °C/77 °F)
	11.8 AH/3.94A	(3hr,1.75V/cell,25 °C/77 °F)
	9.35 AH/9.35A	(1hr,1.67V/cell,25 °C/77 °F)
Max. Discharge Current	204A (5s)	
Internal Resistance	Approx 18mΩ	
Operating Temperature	Discharge	-20 ~55°C (-4 ~131°F)
	Charge	0 ~40°C (32 ~104°F)
	Storage	-20 ~50°C (-4 ~122°F)
Nominal Operating Temperature	25±3°C (77±5°F)	
Cycle Use	Initial Charging Current less than 3.4A.Voltage	
	14.4V~15.0V at 25°C(77°F)Temp. Coefficient-30mV/°C	
Standby Use	No limit on Initial Charging Current Voltage	
	13.5V~13.8V at 25°C(77°F)Temp. Coefficient-20mV/°C	
Capacity affected by Temperature	40°C (104°F)	103%
	25°C (77°F)	100%
	0°C (32°F)	86%
Self Discharge	ZINOVA ZG series batteries may be stored for up to 9 months at 25°C(77°F) and then a freshening charge is required.	
	For higher temperatures the time interval will be shorter.	

Applications

- ◆ Telecommunications
- ◆ Solar system
- ◆ Wind power system
- ◆ Engine starting
- ◆ Wheelchair
- ◆ Floor cleaning machines
- ◆ Golf trolley
- ◆ Boats



Constant Current Discharge (Amperes) at 25°C (77°F)

F.V/Time	20min	30min	45min	1h	2h	3h	4h	5h	6h	7h	8h	9h	10h	20h
1.85V/cell	14.4	11.3	8.61	7.21	4.57	3.49	2.89	2.49	2.15	1.90	1.72	1.57	1.48	0.82
1.80V/cell	16.5	12.6	9.50	7.96	4.95	3.73	3.06	2.62	2.26	1.99	1.80	1.65	1.55	0.85
1.75V/cell	18.5	13.9	10.3	8.52	5.24	3.94	3.20	2.72	2.34	2.06	1.86	1.70	1.58	0.87
1.70V/cell	19.9	14.9	10.9	9.01	5.56	4.11	3.31	2.81	2.42	2.13	1.91	1.75	1.62	0.88
1.67V/cell	20.8	15.4	11.3	9.35	5.70	4.24	3.39	2.86	2.46	2.16	1.94	1.77	1.64	0.89
1.60V/cell	22.5	16.5	12.1	9.93	5.93	4.41	3.52	2.95	2.52	2.21	1.98	1.81	1.67	0.90

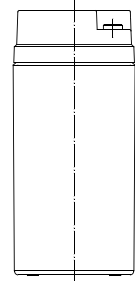
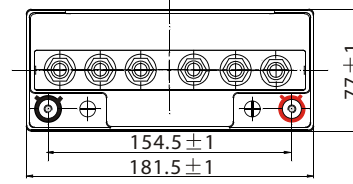
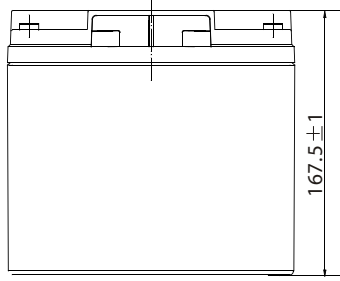
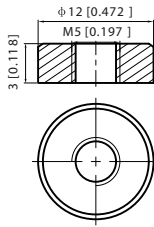
Constant Power Discharge (Watts/cell) at 25°C (77°F)

F.V/Time	20min	30min	45min	1h	2h	3h	4h	5h	6h	7h	8h	9h	10h	20h
1.85V/cell	27.5	21.8	16.7	14.0	8.94	6.83	5.68	4.92	4.26	3.78	3.42	3.13	2.96	1.63
1.80V/cell	31.1	24.1	18.3	15.4	9.63	7.29	5.99	5.15	4.46	3.95	3.57	3.28	3.09	1.69
1.75V/cell	34.6	26.2	19.6	16.4	10.2	7.68	6.26	5.33	4.60	4.07	3.68	3.37	3.14	1.73
1.70V/cell	36.9	27.9	20.7	17.3	10.7	7.98	6.45	5.48	4.75	4.20	3.78	3.46	3.21	1.75
1.67V/cell	37.9	28.6	21.3	17.8	11.0	8.20	6.59	5.58	4.82	4.25	3.83	3.50	3.25	1.76
1.60V/cell	40.6	30.4	22.7	18.8	11.3	8.49	6.81	5.74	4.92	4.33	3.89	3.57	3.31	1.78

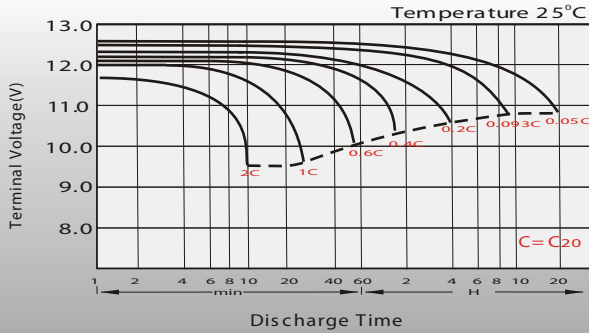
Dimensions

T1 2 Terminal

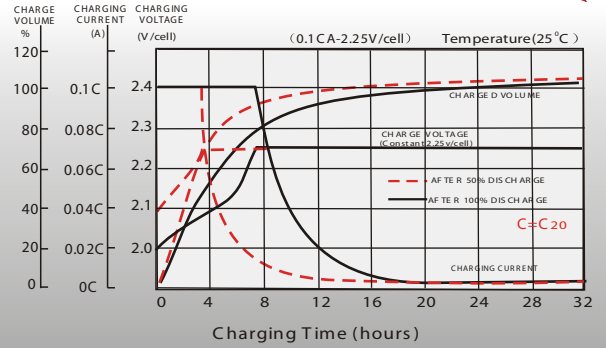
Unit: mm [inches]



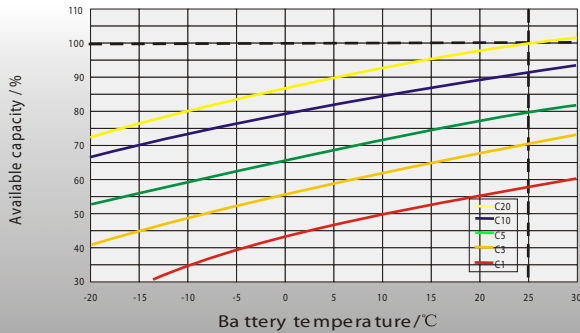
Discharge Characteristics



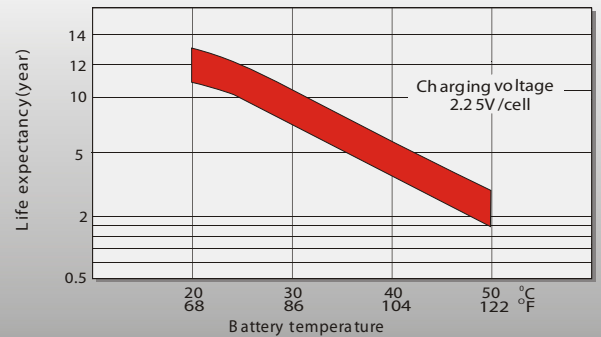
Float Charging Characteristics



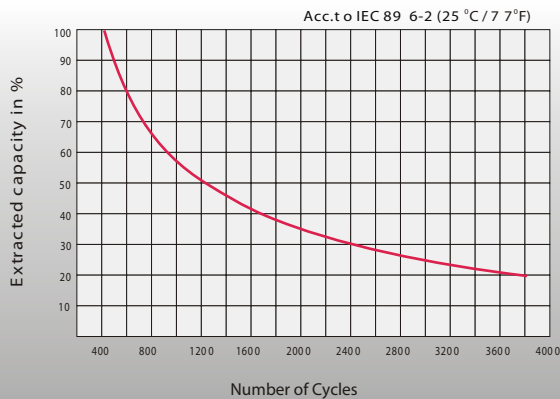
Temperature Effects in Relation to Battery Capacity



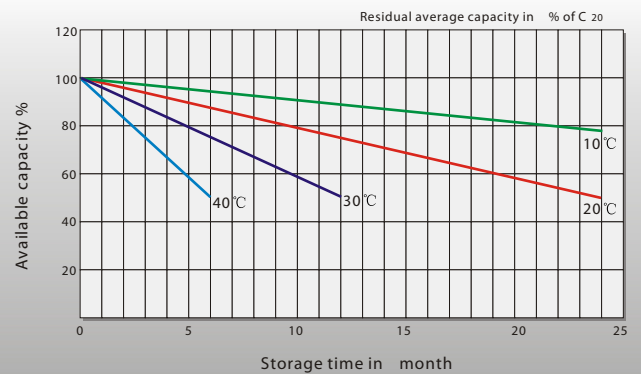
Effect of Temperature on Long Term Float Life



Cycle Life in Relation to Depth of Discharge



General Relation of Capacity VS. Storage Time



Sales Office

China sales office:

Add: 5th Floor, Xinbaohui Bldg., Nanshai Blvd., Nanshan, Shenzhen, China. 518052
Tel: +86-755-86036060 (100 lines)
Fax: +86-755-26067269
E-mail: export@leoch.com
Http://www.leoch.com

North America sales office:

Add: 19751 Descartes, Unit A, Foothill Ranch, CA 92610, USA
Tel: 949-588-5853
Fax: 949-588-5966
E-mail: sales@leoch.us
Http://www.leoch.us

Europe sales office:

Add: 9B Wheatstone Park, Waterwells Business Park, Gloucester, GL2 2AQ, UK.
Tel: +44(0) 01452 729428
Fax: +44 (0)1452-690125
E-mail: Sales.Europe@leoch.com

Singapore sales office:

Add: No.53, Ubi Avenue 1, #03-21 Paya Ubi Industrial Park, Singapore 408934
Tel: + 65 6841 6629
E-mail: sales.sg@leoch.com

HongKong sales office:

Add: Unit 3910, 39/F, Cable TV Tower, No.9 Hoi Shing Road, Tsuen Wan, NT, H.K
Tel: +852 3578 6666
E-mail: sales.hk@leoch.com