

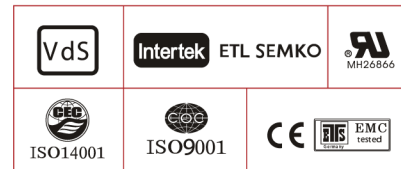
### Specification

Nominal Voltage	12V	
Nominal Capacity(10HR)	65.0AH	
Dimension	Length	348±3mm (13.70 inches)
	Width	167±2mm (6.57 inches)
	Container Height	178±2mm (7.01 inches)
	Total Height (with Terminal)	178±2mm (7.01 inches)
Approx Weight	Approx 20 kg (42.3lbs)	
Terminal	T6 / T1	
Container Material	ABS	
Rated Capacity	68.0 AH/3.40A	(20hr, 1.80V/cell, 25 °C/77 °F)
	65.0 AH/6.50A	(10hr, 1.80V/cell, 25 °C/77 °F)
	56.0 AH/11.2A	(5hr, 1.75V/cell, 25 °C/77 °F)
	48.9 AH/16.3A	(3hr, 1.75V/cell, 25 °C/77 °F)
	41.6 AH/41.6A	(1hr, 1.60V/cell, 25 °C/77 °F)
Max. Discharge Current	780A (5s)	
Internal Resistance	Approx 7.3m Ω	
Operating Temperature	Discharge : -15~50°C (5 ~122°F)	
	Charge : 0 ~40°C (32 ~104°F)	
	Storage : -15~40°C (5 ~104°F)	
Nominal Operating Temp. Range	25 ±3°C (77 ±5°F)	
Cycle Use	Initial Charging Current less than 19.5A. Voltage	
	14.4V~15.0V at 25°C(77°F)Temp. Coefficient -30mV/°C	
Standby Use	No limit on Initial Charging Current Voltage	
	13.5V~13.8V at 25°C(77°F)Temp. Coefficient -20mV/°C	
Capacity affected by Temperature	40°C (104°F)	103%
	25°C (77°F)	100%
	0°C (32°F)	86%
Self Discharge	ZINOVA ZA series batteries may be stored for up to 6 months at 25°C(77°F) and then a freshening charge is required.	
	For higher temperatures the time interval will be shorter.	



### Applications

- ◆ All purpose
- ◆ Uninterruptable Power Supply (UPS)
- ◆ Electric Power System (EPS)
- ◆ Emergency backup power supply
- ◆ Emergency light
- ◆ Railway signal
- ◆ Aircraft signal
- ◆ Alarm and security system
- ◆ Electronic apparatus and equipment
- ◆ Communication power supply
- ◆ DC power supply
- ◆ Auto control system



### Constant Current Discharge (Amperes) at 25 °C (77°F)

F.V/Time	5min	10min	15min	20min	30min	45min	1h	2h	3h	4h	5h	6h	8h	10h	20h
1.85V/cell	119.3	91.7	79.0	68.6	53.2	40.2	32.6	19.7	15.0	12.3	10.5	9.20	7.44	6.26	3.35
1.80V/cell	149.3	107.3	89.9	77.2	58.3	43.5	34.9	21.0	15.8	12.9	11.0	9.59	7.74	6.50	3.40
1.75V/cell	168.4	117.0	98.2	82.7	62.5	46.2	36.9	21.9	16.3	13.2	11.2	9.78	7.86	6.57	3.44
1.70V/cell	185.4	126.4	104.8	87.8	65.3	48.1	38.5	22.6	16.8	13.6	11.5	9.98	7.97	6.63	3.48
1.65V/cell	202.8	136.1	111.4	92.8	68.5	50.3	40.0	23.2	17.2	13.8	11.7	10.2	8.09	6.70	3.52
1.60V/cell	220.0	146.6	119.2	97.7	71.9	52.3	41.6	23.9	17.6	14.1	11.9	10.3	8.20	6.79	3.54

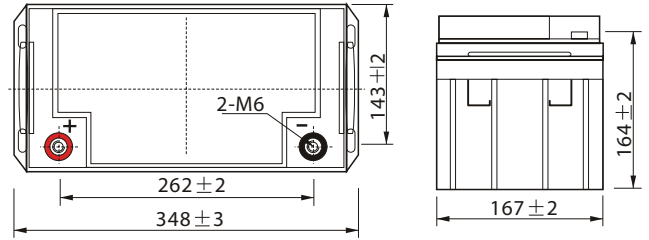
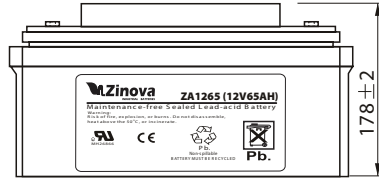
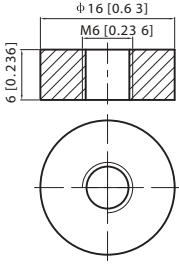
### Constant Power Discharge (Watts) at 25 °C (77°F)

F.V/Time	5min	10min	15min	20min	30min	45min	1h	2h	3h	4h	5h	6h	8h	10h	20h
1.85V/cell	226.3	175.5	152.8	133.7	104.3	79.3	64.6	39.1	30.0	24.7	21.1	18.5	15.0	12.7	6.80
1.80V/cell	280.5	203.9	172.6	149.6	113.8	85.4	68.9	41.6	31.5	25.8	22.0	19.3	15.6	13.1	6.88
1.75V/cell	313.5	220.8	187.4	159.4	121.5	90.4	72.7	43.3	32.4	26.4	22.4	19.6	15.8	13.2	6.93
1.70V/cell	342.1	236.6	198.8	168.3	126.3	93.8	75.7	44.6	33.2	26.9	22.8	19.9	15.9	13.3	6.98
1.65V/cell	370.9	253.0	210.1	177.2	132.1	97.8	78.3	45.6	34.0	27.4	23.2	20.2	16.2	13.4	7.06
1.60V/cell	398.3	270.5	223.3	185.6	138.1	101.3	81.2	46.9	34.7	27.9	23.6	20.5	16.3	13.5	7.07

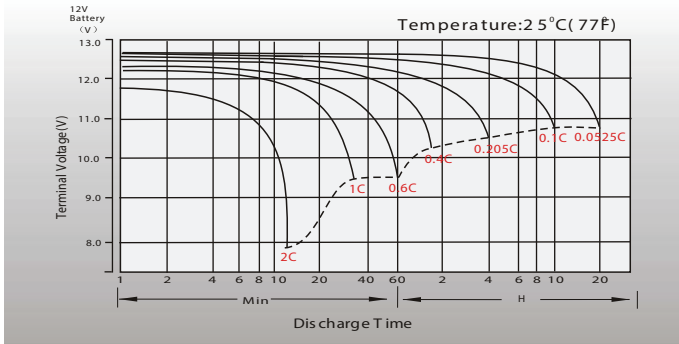
# Dimensions

## T6 Terminal

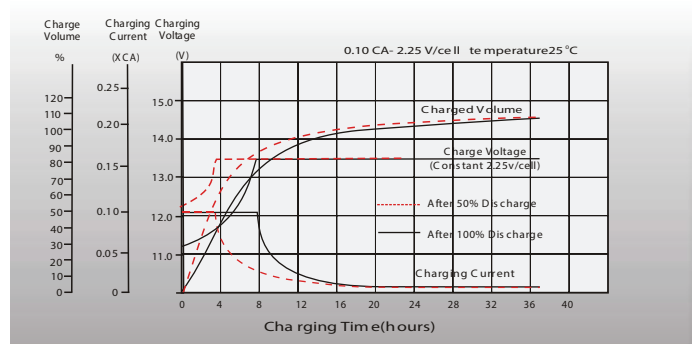
Unit: mm [inches]



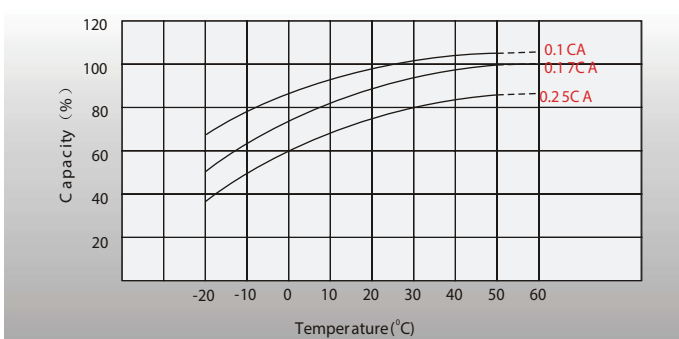
## Discharge Characteristics



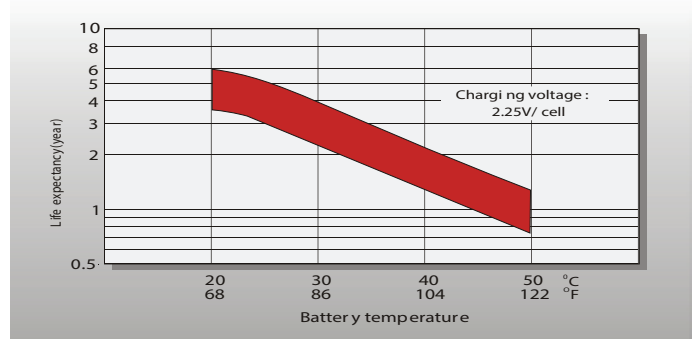
## Float Charging Characteristics



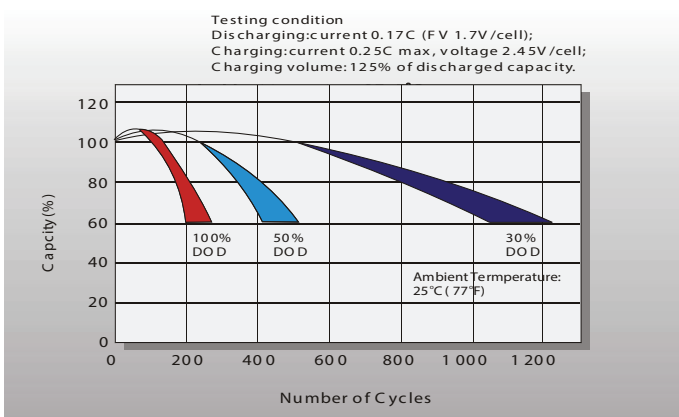
## Temperature Effects in Relation to Battery Capacity



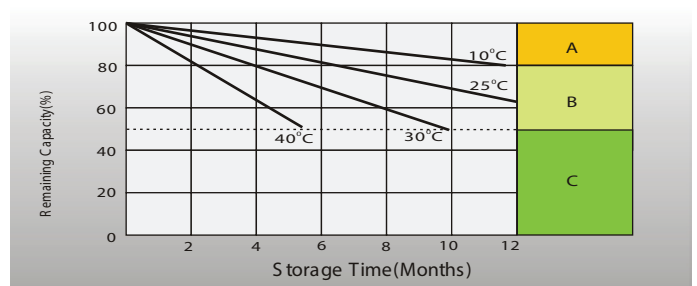
## Effect of Temperature on Long Term Float Life



## Cycle Life in Relation to Depth of Discharge



## Self Discharge Characteristics



- A** No supplementary charge required (Carry out supplementary charge before use if 100% capacity is required)
- B** Supplementary charge required before use. Optional charging ways as below:
  - Charged for a above 3 days at limited current 0.25CA and constant voltage 2.25V/cell.
  - Charged for a above 20 hours at limited current 0.25CA and constant voltage 2.45V/cell.
  - Charged for 8 ~10 hours at limited current 0.05 CA.
- C** Supplementary charge may often fail to recover the capacity. The battery should never be left standing till this is reached.

## Sales Office



Perpa İş Merkezi B-Blok 8 Kat.No:991Şişli - İSTANBUL

Tel : 0 (212) 221 27 48 / 49

Faks : 0 (212) 221 27 51

Web : www.caparenerji.com

E-mail : info@caparenerji.com

